

2021 COLLECTION

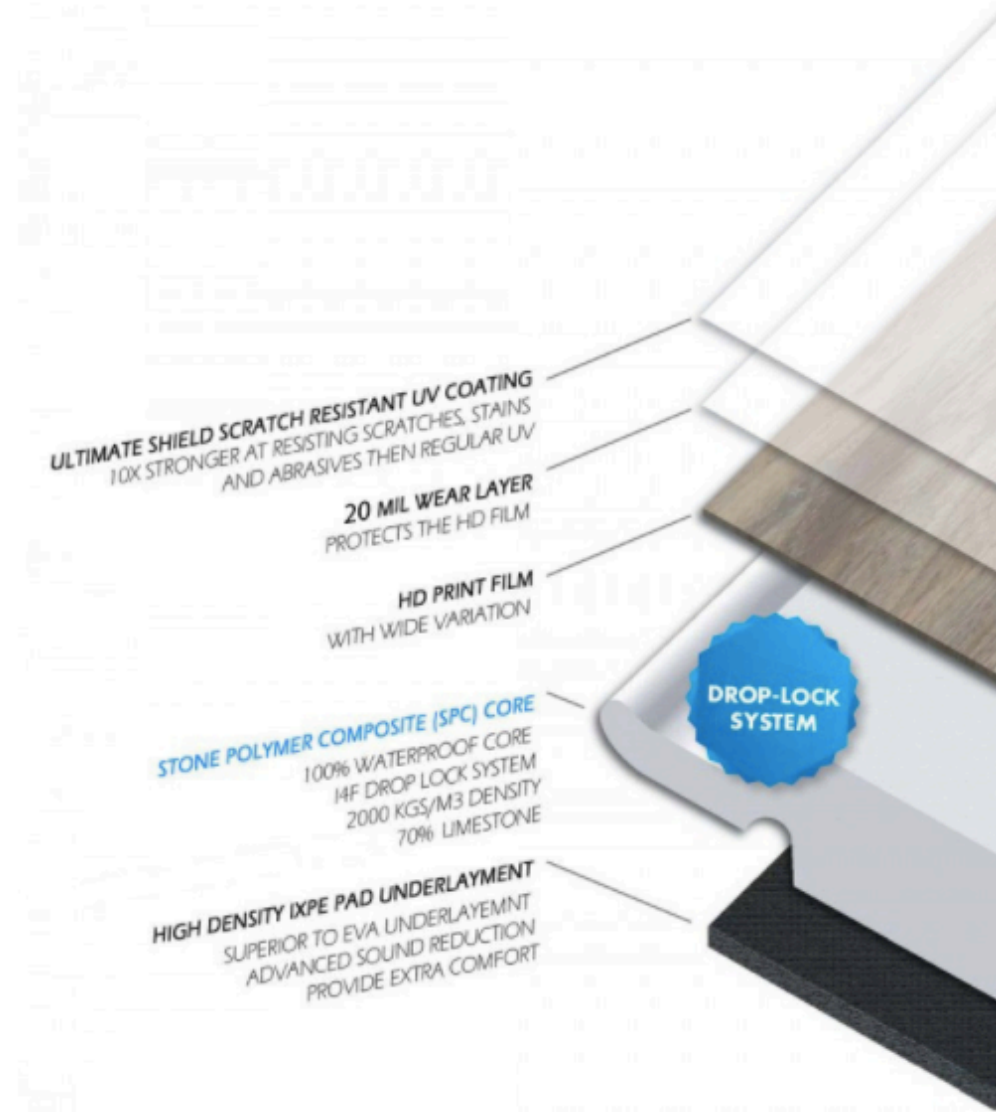
FloorLaBs
One Step Ahead



Premium European Quality Standards | 100% Waterproof | Pet Friendly | Stain Resistant | Impact Resistant | Lifetime Residential Warranty | Quick & Easy to Install | Patented click locking system | Easy to Maintain | Scratch Resistant | Ultra HD Stunningly Beautiful Wood Visuals | Natural wood feel surface texture | Healthy Flooring choice with no formaldehyde & no phthalates & no heavy metals & no benzene & no plasticizers | Intertek Clean Air Certified Flooring; which meets stringent indoor air quality emissions criteria | Made from 70% Natural Stone & 30% Virgin PVC | Very affordable product and install cost | Won't expand or contract | No acclimation | Worry & Stress free maintenance | Installs right over most hard & flat floors | Suitable with underfloor heating | Conforms to room temperature | Fire Resistant | Wear resistant | Safe, slip resistant surface | Sound Absorbing, built in high density IXPE underpad | Antibacterial | Premium Quality Products - which meet and exceed ISO & ASTM standards | Attractive & Informative Packaging |

FloorLaBs | VINYL SPC COLLECTION

FloorLaBs
One Step Ahead





Easy Click Installation



100% Waterproof



Built In Premium IXPE Under Pad



Suitable With Underfloor Heating



Indent Resistant, Strong & Stable



Lay Over Existing Floors



HD Design & Textures



Slip Resistant & Ultra Quiet



Environmentally Friendly



Naturally Warmer



Meets All ISO & ASTM Quality



Wear Resistant



Hard to Inflame



Ultimate Shield Surface Coating



Stain Resistant



Healthy Flooring Choice



LOCKING SPC RIGID CORE FLOORS

Plank Size: 7.13" x 48" Inches | Micro Beveled Edges

Core: SPC (Stone Polymer Composite)

Thickness: 5mm (with 1.0mm high density pre attached underpad)

7.5mm / 6.5mm thickness available on factory container orders

Protection: Ultimate Shield Scratch, Stain and Wear Resistant Double UV Coating

Wear Layer: 22mil (0.55mm) | 20mil (0.5mm)

Visuals: Ultra HD, Nature Inspired Realistic Wood

Surface: Wood Grain Embossed, Impressive Textures

Carton: 10 Pieces, 23.8 sqft / 55 cartons per pallet, 1309 sqft

Weights: 42 lbs per Carton / 2300 lbs per pallet

Installation: I4F Locking System

Residential Warranty: 25 Year Limited

Light Commercial Warranty: 7 Year Limited

GLUE DOWN SERIES - SPC RIGID CORE FLOORS

Size: 7.13" x 48" |

Thickness: 4mm & 3mm

Wear Layer: 22 mil (0.55mm)

Protection: Ultimate Shield Scratch, Stain and Wear Resistant Double Coating

HIGH QUALITY STANDARDS OF PRODUCTION:

Our products meet and exceed USA Quality ASTM & ISO Standards:



ENDURANCE TECH CORE

Featuring proprietary technology to create the ultimate strength SPC waterproof core, which provides over 2000kg m3 density. This results in a product that is structurally solid, impact resistant, extremely durable and guaranteed to last. We achieve this by utilizing a premium quality and completely safe formula which consists of 70% Natural Stone, Virgin PVC, as well as the highest grade polymers and minerals fused together under heat & high pressure using special tech Extruders. Our Core provides next level performance above and beyond competing products.

SPC
Stone Polymer Composite

WARRANTY
20 Year Residential
10 Year Light Commercial

DURABLE - ULTIMATE SHIELD PROTECTION
Unmatched Scratch and Stain Resistant Coating
20-mil Wear Layer with Double UV Coat

EASY DROP LOCK INSTALLATION
- Score and Snap Easily
- Locks securely

STRONG STONE POLYMER CORE
Made of 70% Stone Powder for ultimate impact strength

ULTIMATE SHIELD PROTECTION
Sets a new industry benchmark in surface protection. This special UV coat technology provides superior performance in Scratch, Stain and Wear Resistance (10x stronger resistance than regular UV).

European Collection

RIGID CORE MAX 20
WATERPROOF - STONE COMPOSITE FLOORING

Drop-Lock Easy Installation / Scratch & Stain Resistant / Pre-Attached Acoustic Pad
Instalación Drop-Lock / Resistente a los Arañazos y las Manchas / Almohadilla Acústica Preinstalada

SAKURA
Resistant to 20 years
Commercial 20 mil

DIURABLE
Resistente a arañazos y manchas
Cubre 10 millones de 10 años

FACE INSTALACIÓN DE BLOQUEO DE DATA
- Click Lock
- Construcción de fácil región

POLÍMERO DE PIEDRA FUERTE
- Resistente a 20 años
- Cubre 10 millones de 10 años

How to Install

Warranty & Installation

Warranty: 20 Year Residential / 10 Year Light Commercial

Installation: See instructions for details

SAKURA

Resistant to 20 years
Commercial 20 mil

SAKURA

Resistant to 20 years
Commercial 20 mil

DIURABLE

Resistente a arañazos y manchas
Cubre 10 millones de 10 años

FACE INSTALACIÓN DE BLOQUEO DE DATA

- Click Lock
- Construcción de fácil región

POLÍMERO DE PIEDRA FUERTE

- Resistente a 20 años
- Cubre 10 millones de 10 años

How to Install

SAKURA

Resistant to 20 years
Commercial 20 mil

SAKURA

Resistant to 20 years
Commercial 20 mil

DIURABLE

Resistente a arañazos y manchas
Cubre 10 millones de 10 años

FACE INSTALACIÓN DE BLOQUEO DE DATA

- Click Lock
- Construcción de fácil región

POLÍMERO DE PIEDRA FUERTE

- Resistente a 20 años
- Cubre 10 millones de 10 años

How to Install

SAKURA

Resistant to 20 years
Commercial 20 mil



SAKURA
Resistant to 20 years
Commercial 20 mil

DIURABLE
Resistente a arañazos y manchas
Cubre 10 millones de 10 años

FACE INSTALACIÓN DE BLOQUEO DE DATA
- Click Lock
- Construcción de fácil región

POLÍMERO DE PIEDRA FUERTE
- Resistente a 20 años
- Cubre 10 millones de 10 años



29102-6



2641-2





29150-4



29053-7





29149-2



2640-1





29145-1



6079-3



FloorLaBs | VINYL SPC COLLECTION

FloorLaBs
One Step Ahead



2614-1



2639-5



FloorLaBs | VINYL SPC COLLECTION

FloorLaBs
One Step Ahead



29039-8



6070-6



FloorLaBs | VINYL SPC COLLECTION

FloorLaBs
One Step Ahead



6062-7



29100-5





2639-4



29151-3

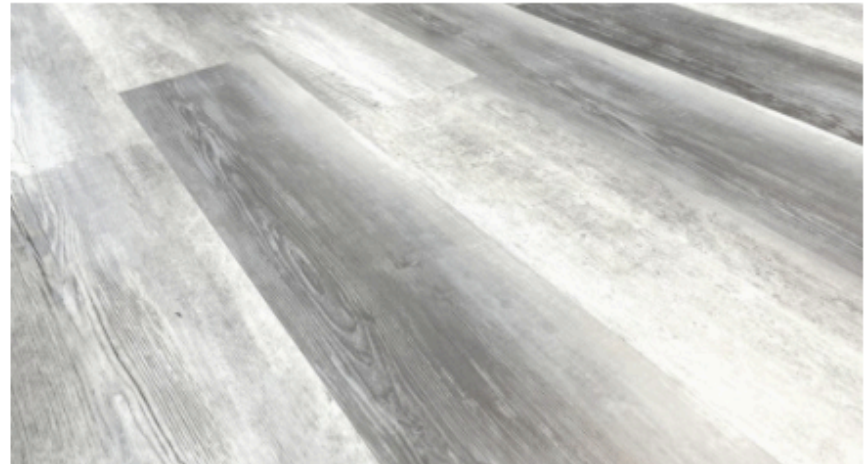


FloorLaBs | VINYL SPC COLLECTION

FloorLaBs
One Step Ahead



29052-5



29101-6





2641-3



2602-2





6062-7



2602-1

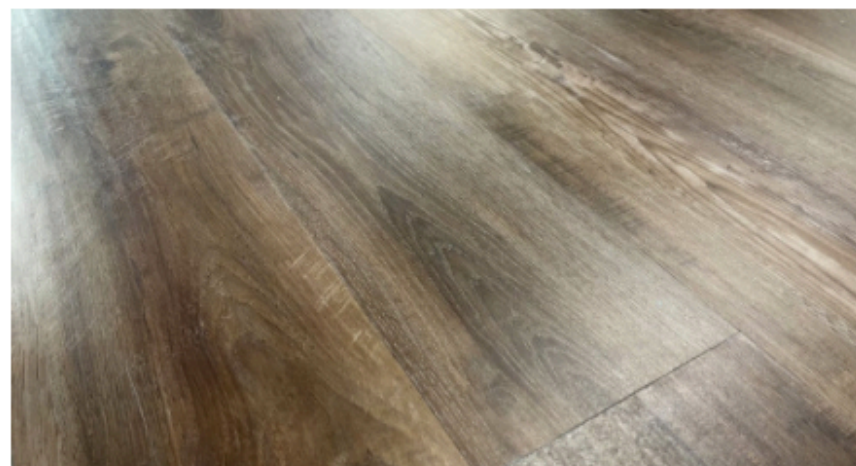




29149-7



29150-6



FloorLaBs | VINYL SPC COLLECTION

FloorLaBs
One Step Ahead



29150-3



2640-1



FloorLaBs | VINYL SPC COLLECTION

FloorLaBs
One Step Ahead



29100-8



29150-1



FloorLaBs | VINYL SPC COLLECTION

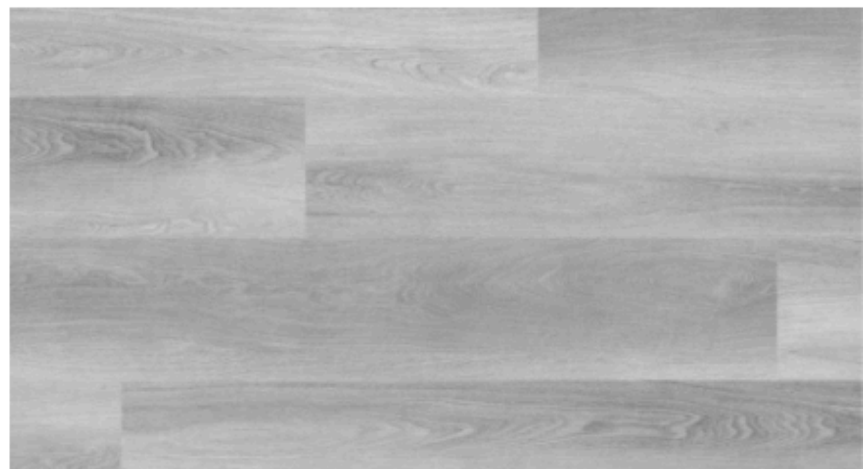
FloorLaBs
One Step Ahead

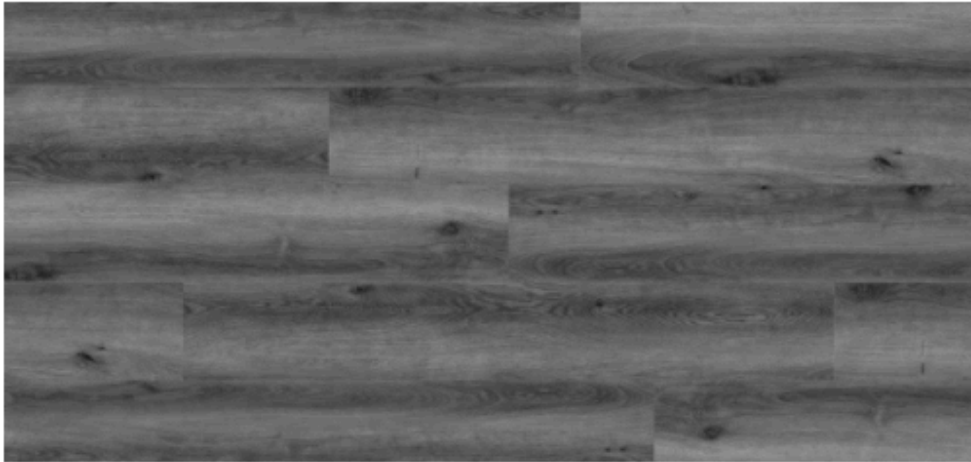


29102-6

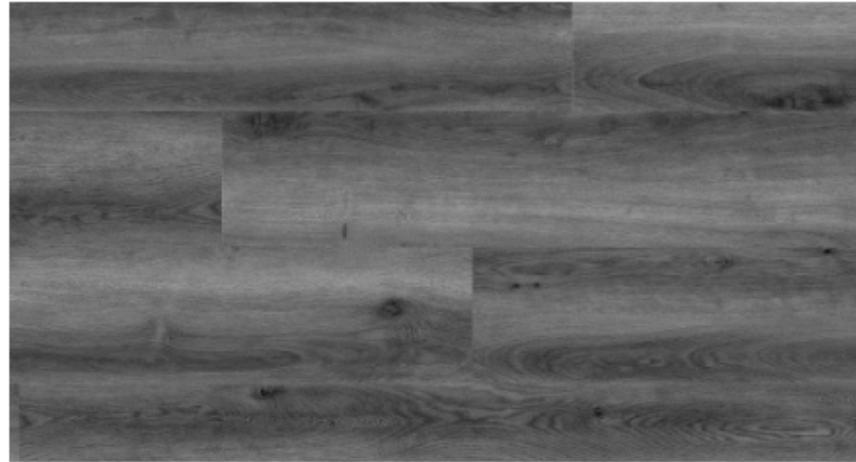


29140-5





29045-6



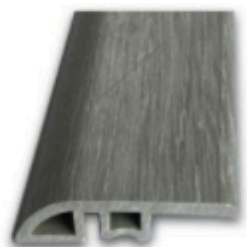
29098-2



TRANSITION PIECES

AVAILABLE FOR SELECT COLORS

**SOLD IN SETS PER COLOR: T MOULD - 4 PCS :: REDUCER - 4 PCS :: STAIR NOSE - 7 PCS*



REDUCER

SIZE MM - 2400 x 45 x 7

SIZE INCH - 94.5 x 1.77 x 0.28



STAIR NOSING

SIZE MM - 2400 x 50 x 26

SIZE INCH - 94.5 x 1.97 x 1.03



T MOULDING

SIZE MM - 2400 x 45 x 7

SIZE INCH - 94.5 x 1.77 x 0.28



FloorLaBs
One Step Ahead

EXPORT DEPARTMENT

export@egecam.com

TEL : +905336725990

HEAD OFFICE

info@egecam.com

TEL : +905317781178

Yeşillik Cad. No:167/1

İZMİR - TURKEY